



Marine Safety Information Bulletin

Commander
U.S. Coast Guard
Sector Delaware Bay
1 Washington Ave
Philadelphia, PA 19147

MSIB Number: 15-22
Contact: Waterways Management Staff
Phone: (215) 271-4889
E-Mail: DelawareBayWWM@uscg.mil
Date: August 11, 2022

NEW ESTABLISHED ANCHORAGE GROUNDS, DELAWARE BAY

The Captain of the Port (COTP), Delaware Bay, is notifying mariners of the amended anchorage regulations, specifically 33 CFR 110.157, paragraphs (a)(18)-(20) for the Delaware Bay and River, and adjacent waters, which established two offshore deep-water anchorages. The establishment of these two anchorages is to improve navigation safety by accommodating recent and anticipated future growth in vessel size and the volume of vessel traffic entering the Delaware Bay and River, and to preserve areas traditionally used or needed for anchoring.

In 2011, the Coast Guard received requests to formally establish anchorages in the Atlantic Ocean offshore from the Delaware coast in response to the Atlantic Coast Port Access Route Study (ACPARS). The Federal Pilots and the Mariners' Advisory Committee for the Bay and River Delaware requested formal anchorage grounds be established to the east and the west of the Southeastern Approach traffic separation scheme in order to preserve areas traditionally used for anchoring from offshore development. The Coast Guard held meetings on July 12, 2018, and August 21, 2018, with maritime stakeholders and waterway users to discuss the impacts to vessel traffic and navigation safety on the Delaware Bay and River due to the expansion of the Panama Canal and the planned deepening of the Delaware River from 40 to 45 feet. The attendees determined that the increased volume of vessel traffic and the size of vessels calling on the Delaware Bay and River, combined with planned and potential offshore development, heightened the need to formally establish these new anchorage grounds.

The Final Rule, effective August 11, 2022, formally establishes two new anchorage grounds: Anchorage C—Cape Henlopen and Anchorage D—Indian River. Anchorage C—Cape Henlopen will be located in the Atlantic Ocean approximately 9.4 miles east of the Delaware coast in naturally deep water with charted depths between 41 and 85 feet. Anchorage D—Indian River will be located in the Atlantic Ocean beginning approximately 6 miles east of the Delaware coast in naturally deep water with charted depths between 40 and 85 feet. The specific coordinates for these anchorage grounds are below and included in the attached chartlets.

Anchorage C – Cape Henlopen - All waters bound by the following points:

Latitude	Longitude
38°40'54.00" N	74°52'00.00" W
38°40'56.08" N	74°48'51.34" W
38°37'36.00" N	74°48'30.00" W

This release has been issued for public information and notification purposes only.

Anchorage D – Indian River - All waters bound by the following points:

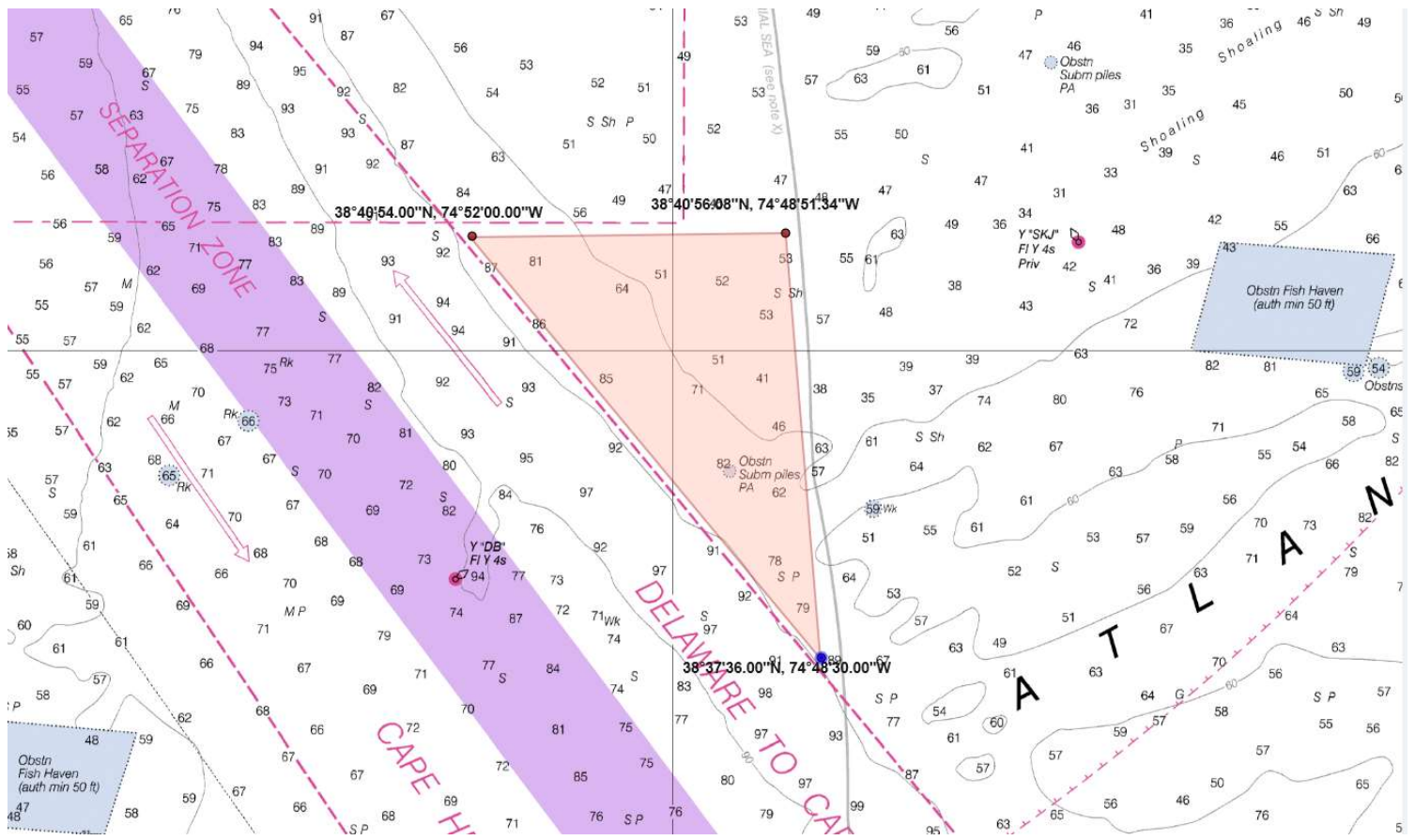
Latitude	Longitude
38°34'56.25" N	74°52'19.12" W
38°33'40.91" N	74°54'41.50" W
38°31'31.08" N	74°55'27.96" W
38°29'07.35" N	74°53'29.25" W
38°28'56.87" N	74°50'28.69" W
38°30'07.37" N	74°48'08.38" W

If you have any questions regarding the contents of this bulletin, please contact the Waterways Management staff at (215) 271-4889 or (267) 515-7294.



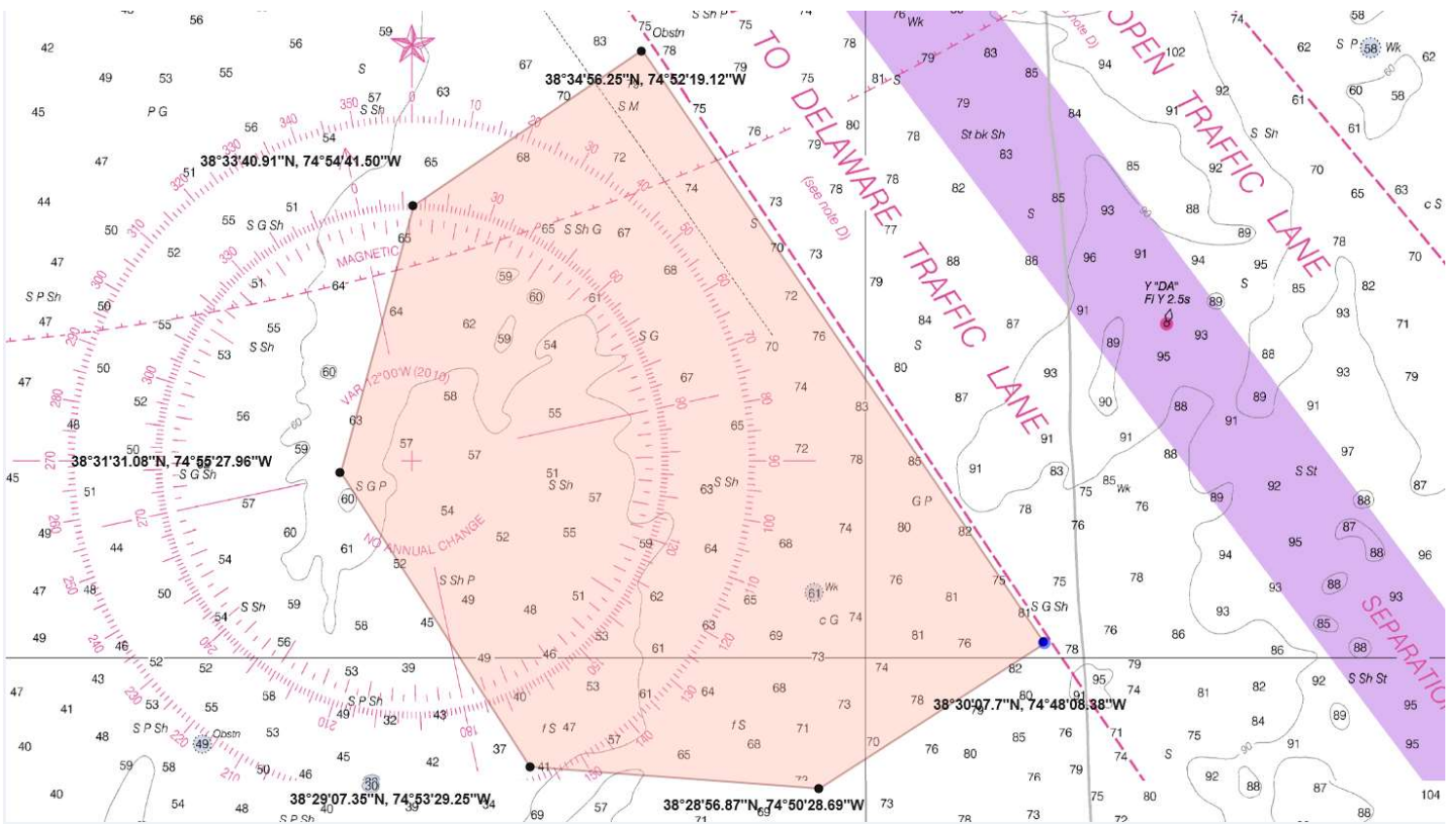
J. D. THEEL
Captain, U.S. Coast Guard
Captain of the Port, Delaware Bay

ANCHORAGE C – Cape Henlopen chartlet



This release has been issued for public information and notification purposes only.

ANCHORAGE D – Indian River Chartlet



This release has been issued for public information and notification purposes only.