

Marine Safety Information Bulletin

Commander
U.S. Coast Guard
Sector Delaware Bay
1 Washington Ave
Philadelphia, PA 19147

MSIB Number: 40-17
Date: November 20, 2017
Contact: Waterways Management Staff
Phone: (215) 271-4889
E-Mail: secdelbaywwm@uscg.mil

Pipeline Removal Marcus Hook Anchorage and Range

The Captain of the Port, Delaware Bay, is notifying mariners of a safety zone established in the southern portion of the Marcus Hook Anchorage and Range on the Delaware River, to facilitate dive operations and pipeline removal.

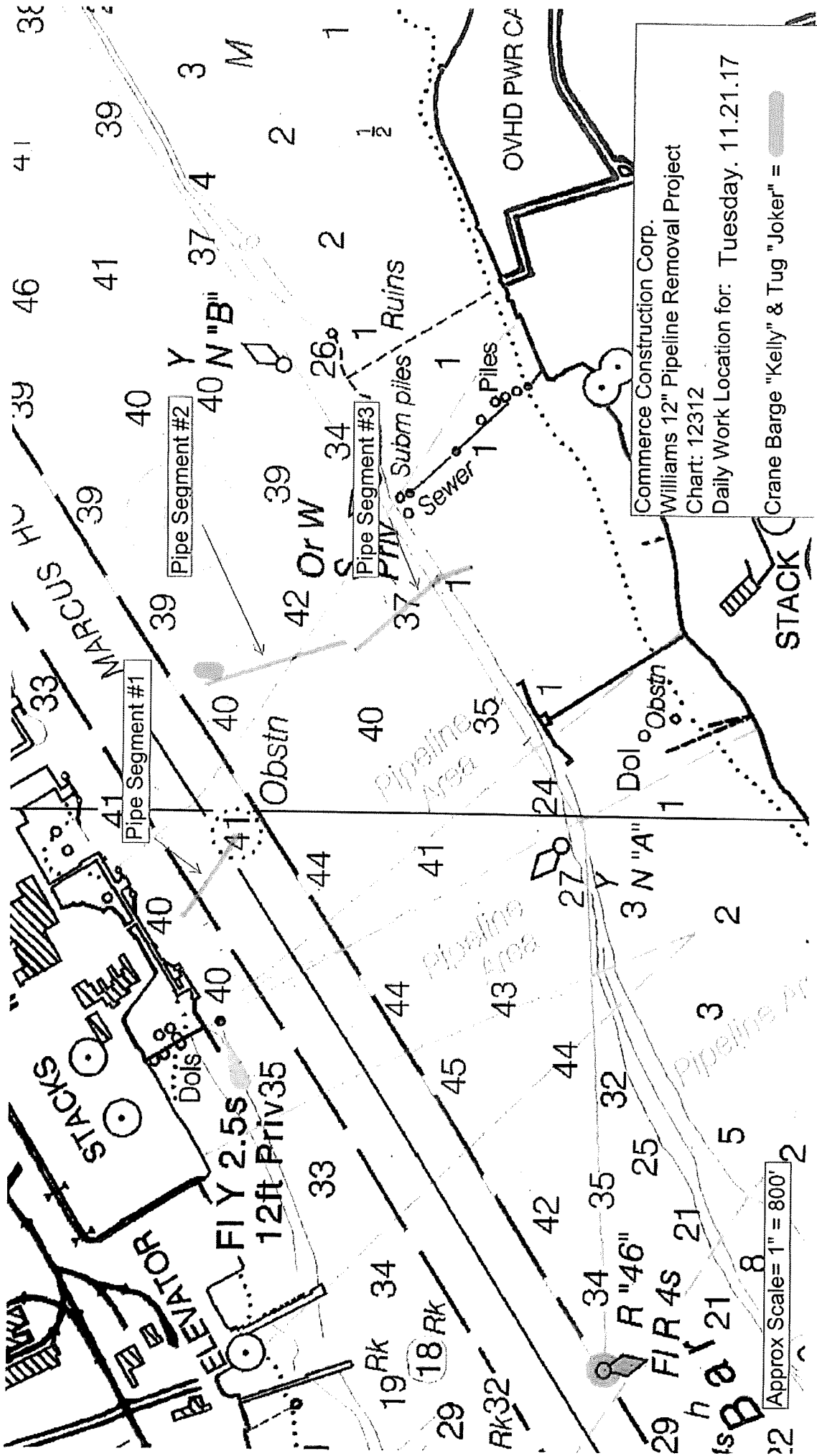
- The safety zone will be enforced from November 21, 2017 through December 8, 2017, unless cancelled earlier by the COTP.
- The crane barge KELLY and towing vessel JOKER will be on scene and assisting with the work.
- There are three sections of pipeline located in the area. All three sections of pipeline will be removed.
- Sections #2 and #3, as noted on the attached drawing, will be removed first. During this time the main navigational channel will not be obstructed by operations related to this pipeline removal and the safety zone will encompass the lower portion of Anchorage No. 7, Marcus Hook Anchorage.
- Section #1, as noted on the attached drawing, will be removed last. Removal of Section #1 will require working vessels to obstruct the main navigational channel of the Delaware River. Subsequently, all vessel traffic will be required to utilize the Marcus Hook Anchorage, Anchorage No. 7, in order to safely transit around the dive operations and pipeline removal. A Marine Safety Information Bulletin and Broadcast Notice to Mariners will be issued in order to inform the public when work transitions from the anchorage to the main navigational channel.
- Mariners are requested to maintain the minimum safe speed to maintain steerage and maintain strict adherence to the rules of the road.

The safety zone is established in all navigable waters within 250 yards of the crane barge KELLY, towing vessel JOKER, and associated diving and pipeline removal equipment.

Vessels requesting to transit the safety zone shall contact the towing vessel JOKER on VHF-FM channel 13 or 80, at least 1 hour, as well as 30 minutes prior to arrival to arrange safe passage. Vessels may also contact the COTP for permission to enter or transit the safety zone on VHF-FM channel 16.

If you have any questions regarding the content of this bulletin, please contact the Waterways Management Staff at (215) 271-4889/4814 or the Command Center at (215) 271-4807.

S. E. Anderson
Captain, U.S. Coast Guard
Captain of the Port, Delaware Bay



Commerce Construction Corp.
 Williams 12" Pipeline Removal Project
 Chart: 12312
 Daily Work Location for: Tuesday, 11.21.17
 Crane Barge "Kelly" & Tug "Joker" =

Approx Scale = 1" = 800'