



# Marine Safety Information Bulletin

Commander  
U.S. Coast Guard  
Sector Delaware Bay  
1 Washington Ave  
Philadelphia, PA 19147

MSIB Number: 34-18  
Date: October 5, 2018  
Contact: Waterways Management Staff  
Phone: (215) 271-4814  
E-Mail: [SecDelBayWWM@uscg.mil](mailto:SecDelBayWWM@uscg.mil)

## OBJECTS IN MANTUA CREEK ANCHORAGE

The Captain of the Port, Delaware Bay, is notifying mariners of two objects reported just outside the main navigational channel of Mifflin Range, within the boundaries of Mantua Creek Anchorage #9 on the Delaware River. **\*\*Please see page 2 for chartlet\*\***

- Object 1 is located at approximately 39° 51.991096' North Latitude, -75° 13.018279' West Longitude.
  - Suspected lost anchor with dimensions 6.5 feet in width and 9 feet in height.
  - Located approximately 460 feet from the channel centerline towards New Jersey shoreline in Mantua Creek Anchorage.
  - **While the depth of water at mean low low water over this obstruction is 42.6' and remains below the channel control depth, charted depth in the area is 43 to 45 feet.**
  
- Object 2 is located at approximately 39° 51.930822' North Latitude, -74° 13.094867' West Longitude.
  - Unknown object.
  - Located approximately 540 feet from channel centerline towards New Jersey shoreline in Mantua Creek Anchorage.
  - **Reduced depth at mean low low water is 29.9 feet.**

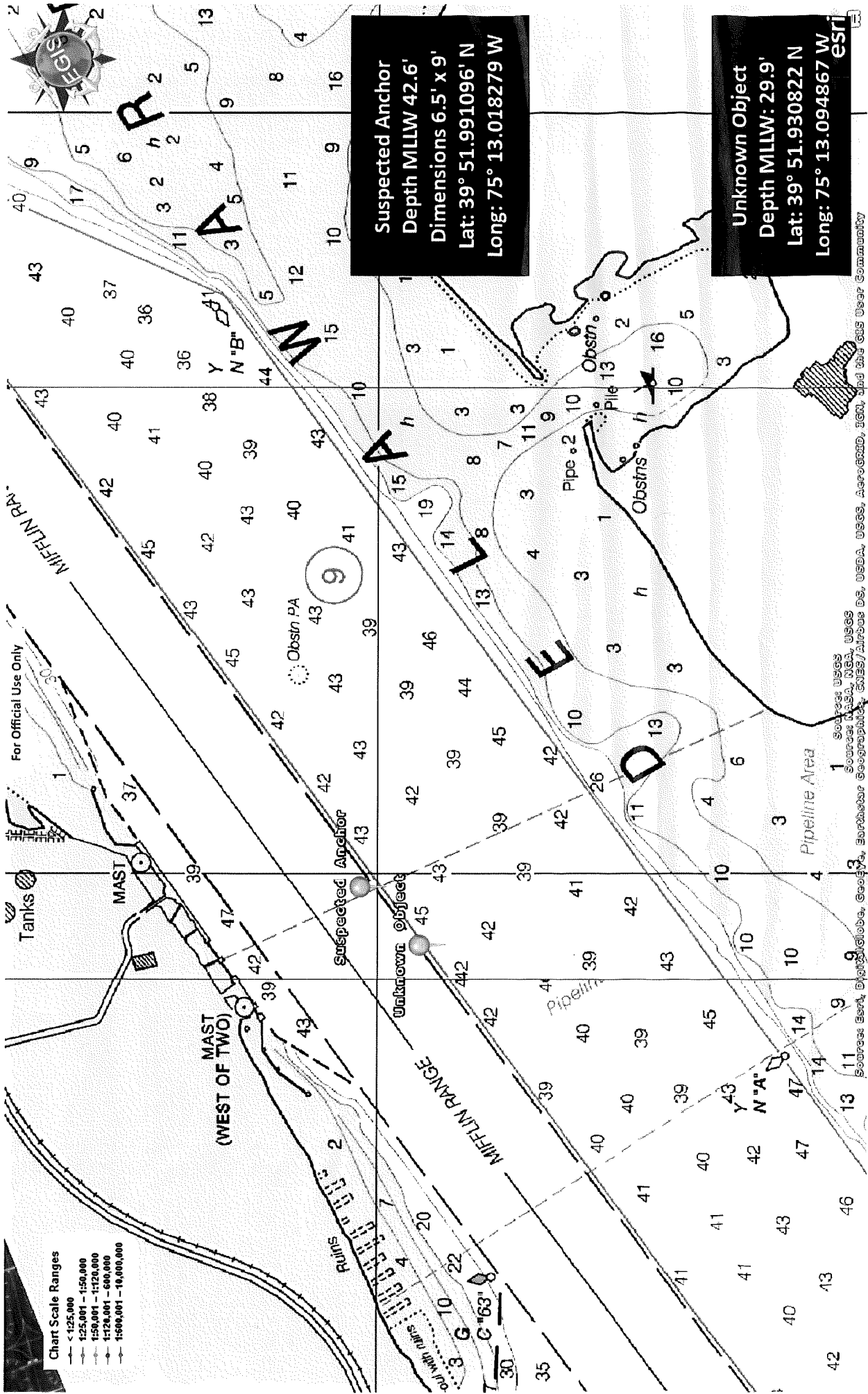
Mariners are advised to use extreme caution when transiting this portion of Mantua Creek Anchorage as some depths at mean low low water could be hazardous to navigation.

**Vessels drafting over 30 feet should avoid this area and transit around the objects.**

Survey and salvage vessels will begin operating in the vicinity of the objects within the next week. As survey and salvage operations progress any waterway restrictions will be broadcast through a broadcast notice to mariners and/or subsequent marine safety information bulletins. Vessels are requested to contact working vessels in this location on VHF Channel 16 and make safe passing arrangements no later than 1 hour prior to arrival at this location.

If you have any questions regarding the content of this bulletin, please contact the Waterways Management staff at (215) 271-4814/4889 or the Command Center at (215) 271-4807.

*S. E. Anderson*  
Captain, U.S. Coast Guard  
Captain of the Port, Delaware Bay



This release has been issued for public information and notification purposes only.