

# Marine Safety Information Bulletin

Commander  
U.S. Coast Guard  
Sector Delaware Bay  
1 Washington Ave  
Philadelphia, PA 19147

MSIB Number: 09-18  
Date: February 1, 2018  
Contact: Waterways Management Staff  
Phone: (215) 271-4889  
E-Mail: [secdelbaywwm@uscg.mil](mailto:secdelbaywwm@uscg.mil)

---

## Marcus Hook Range Blasting Update

The Captain of the Port (COTP), Delaware Bay is notifying mariners that Great Lakes Dredge and Dock will be continuing to conduct rock blasting in the Marcus Hook Range to facilitate the main channel deepening project. Rock blasting operations will be taking place at the southern end of Marcus Hook Range beginning on February 3, 2018. Cleanup from the blasts is expected to be completed no later than February 14, 2018.

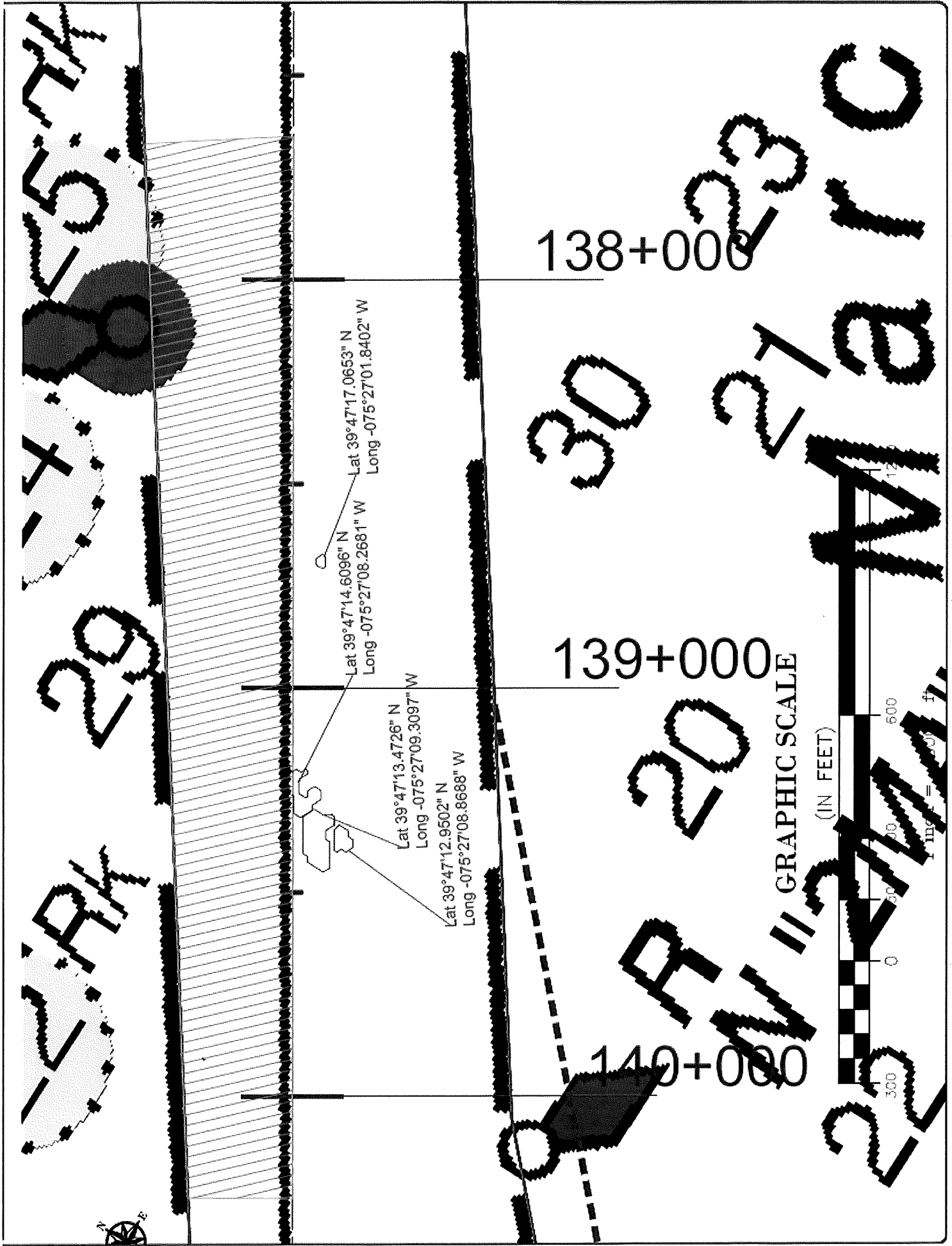
The blasting will take place primarily on the green side of the channel. However, several blast locations will be located on the red side of the channel centerline. The attached chartlet and GPS coordinates can be referenced for approximate locations of these operations.

Mariners are reminded of the requirements found in 33 CFR 165.T05-0935 and are encouraged to remain familiar with them through the completion of the Delaware River main channel deepening project.

Mariners are advised to exercise extreme caution when transiting the area. Vessels wishing to transit the safety zone must make satisfactory passing arrangements, at least 30 minutes prior to arrival, with the drill boat APACHE, dredge TEXAS or dredge NEW YORK via VHF-FM channel 13 as applicable.

If you have any questions regarding the contents of this bulletin or the expectations of the COTP, please contact the Waterways Management staff at (215) 271-4889 or the Situation Unit Controller at (215) 271-4807.

S. E. Anderson  
Captain, U.S. Coast Guard  
Captain of the Port, Delaware Bay



Lat 39°47'14.6096" N  
 Long -075°27'08.2681" W

Lat 39°47'17.0653" N  
 Long -075°27'01.8402" W

Lat 39°47'13.4726" N  
 Long -075°27'09.3097" W

Lat 39°47'12.9502" N  
 Long -075°27'08.8688" W

138+000

139+000

140+000

GRAPHIC SCALE

(IN FEET)

